

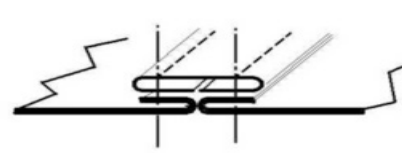
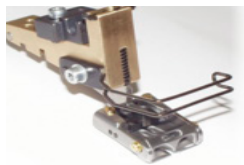
BUST CROSS SEAM

# TWO-NEEDLE PLOUGH FEET

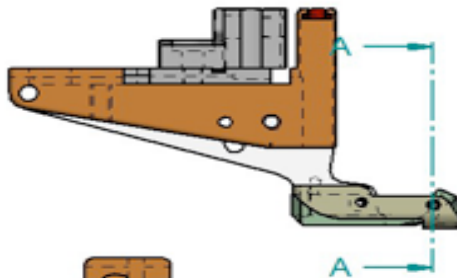
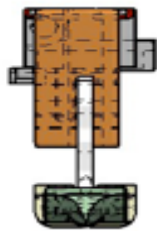
Loose and non-stressed sewing on of lace/tapes fed from above through needle penetration in inclined lace/tape intake area.

**SPECIAL FEATURES:**

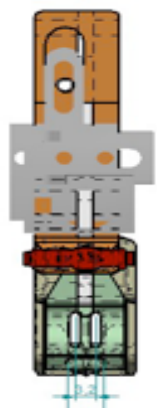
- Loose sewing on of cover tape fed from above through integrated tape guide
- Bust cross seam can also be sewn over without cover tape
- All material thicknesses are guided exactly by adjustable intermediate soles
- For needle distances from 3.2 mm to 6.4 mm



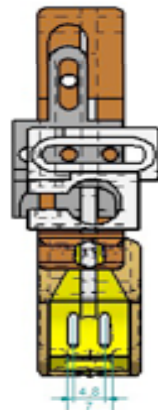
Seam diagram, bust cross seam with and without tape



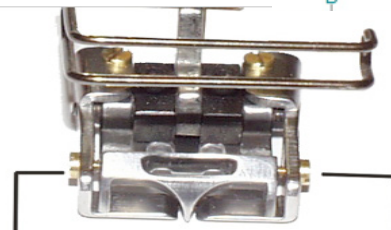
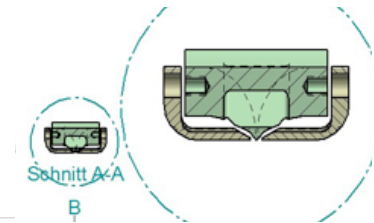
MK Nummer MK number	Nadelabstand needle distance	Kanalbreite channel width
94847	3,2mm	5,5mm
94928	3,2mm	8,0mm
94908	4,0mm	7,0mm
94849	4,8mm	7,0mm
94850	4,8mm	7,5mm
948491	4,8mm	9,0mm
94786	6,4mm	9,0mm
94837	6,4mm	9,5mm



94848 - 94847



94849



Midsoles are adjustable depending on the fabric thickness

Double-needle plow foot