

DOUBLE NEEDLE DECORATIVE SEAMS FOR AUTOMOTIVE AND UPHOLSTERY APPLICATIONS

SEAM CENTER GUIDANCES

SPECIAL FEATURES:

- The guide blade comes from the rear, through the sewing foot.
- This means that the operator has a clear view of the needle penetration.

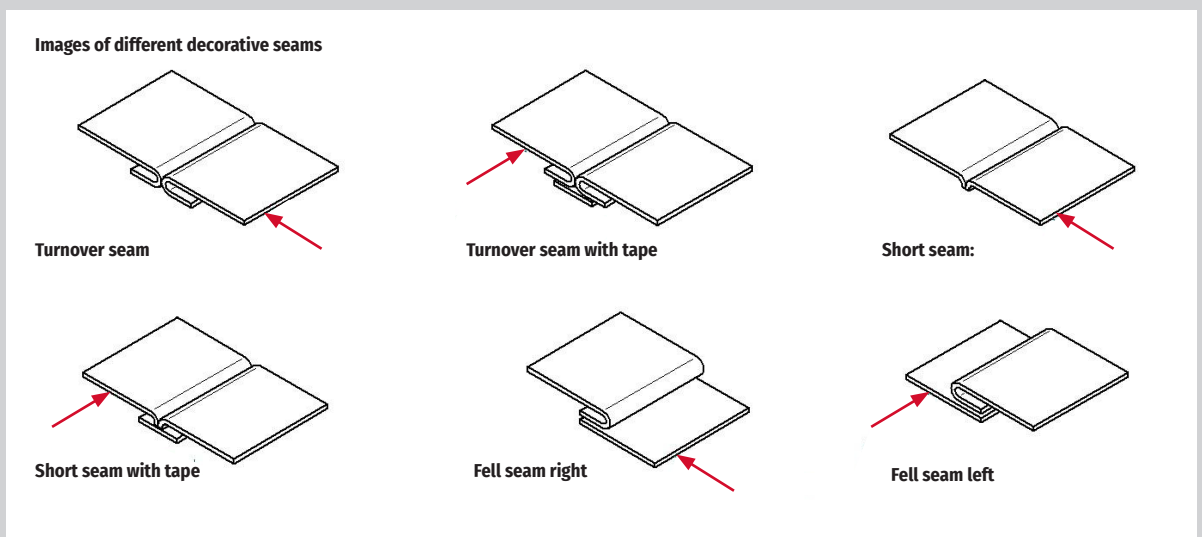
MK DIFFERENTIATES BETWEEN TWO SEAM TYPES

SHORT SEAM WITH AND WITHOUT TAPE

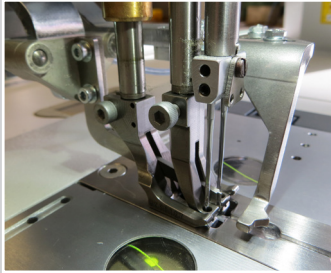
The seam stub is guided into the throat plate. The mounting seam is first sewn with an edge cutter machine. Edge width 1.2 - 3 mm.

TURNOVER SEAM WITH AND WITHOUT TAPE

The seam allowances of the mounting seam are spread apart by a plow on the throat plate and also sewn. The mounting seam has a width of 5 mm and more.



AUTOMOTIVE · FURNITURE AND UPHOLSTERY · SEWING IN TECHNICAL APPLICATIONS
DECORATIVE SEAMS: SEAM CENTER GUIDANCES



Seam center guide and plow guide without tape on a flatbed machine



Seam center guide with tape on a post bed machine



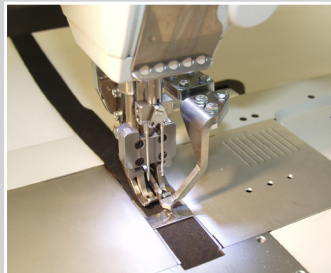
Seam center guide and plow guide with reproducible precision height adjustment on a post bed machine



Seam center guide and plow guide for a short seam without tape



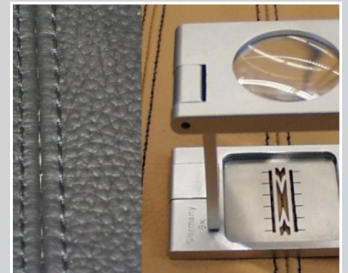
Seam center guide and plow guide with forward/back adjustment on a post bed machine



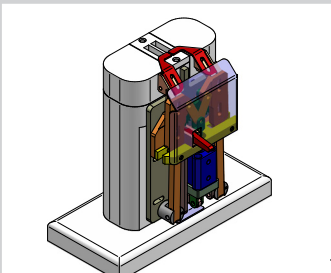
Seam center guide and plow guide for a turnover seam with tape from below



Seam center guide and plow guide extra high at rear on a post bed machine



Quality magnifier for checking centering and stitch length of the decorative seam.



Seam center guide. Turnover seam guide mounted below on post-bed



NEW
Seam center guide special presser foot with special coating to avoid marking delicate leather