

EDGE CUTTER UNITS FOR ALL COMMON SEWING MACHINE MAKES

EDGE CUTTERS FOR STEPPED CUTTING

The “stepped edge” is a quality feature of high-end outerwear garments. The reverse edge is very flat as a result of the stepped edge.

The MK edge cutter operates with a joint cutting and punching knives . The punching knives is attached directly adjacent to the cutting knife. Depth adjustment of the punching knives is realized using an adjusting wheel with a scale to enable rapid adaptation to different material thicknesses.

SPECIAL FEATURES:

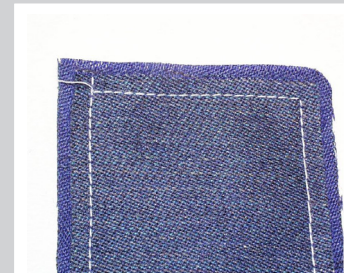
- Stepped cutting from first stitch on,
- Stepped cutting over tight radii and corners,
- No seam interruption to push in the knife,
- No change in specified time
- Retrofitting on existing sewing machines



Dürkopp gripper feed machine with edge cutting equipment



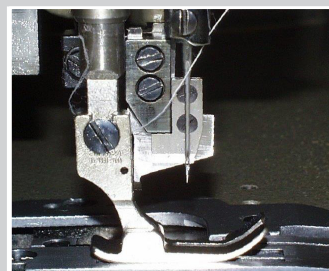
“Stepped edge” sewing pattern



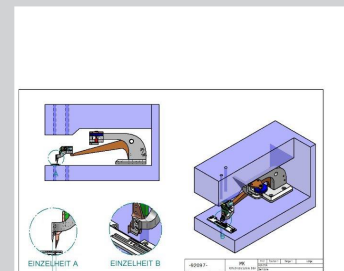
“Stepped edge” sewing pattern



Juki needle transport machine with edge cutting equipment



Edge cutting knife with punching knives for stepped edge



Function description of edge cutting knife with punching knives mounted next to it for gradation